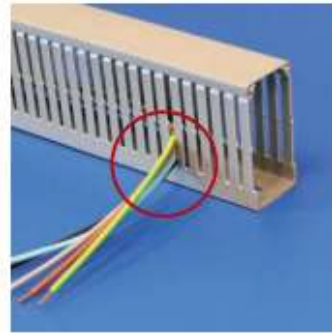




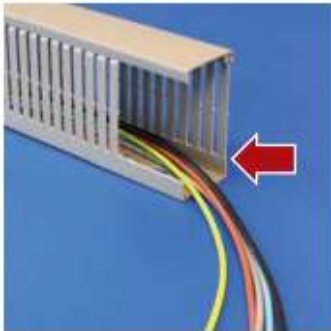
## MAIN TECHNICAL FEATURES



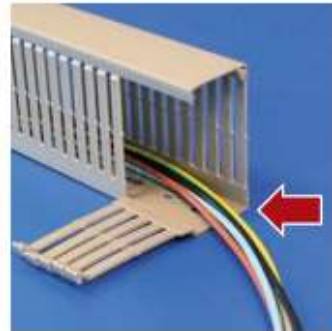
Total safety both for the operator and the cables thanks to the fully rounded slot profile



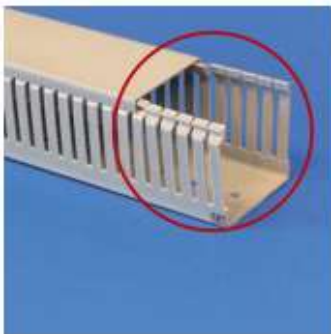
Cable retaining profile for the 80 and 100mm high trunkings



First break line at the base of the slots allows to remove them very easily; the impact strength of the slots avoids them breaking off unintentionally



Second break line at the base of the slots permits to remove the whole trunking wall (with tool)



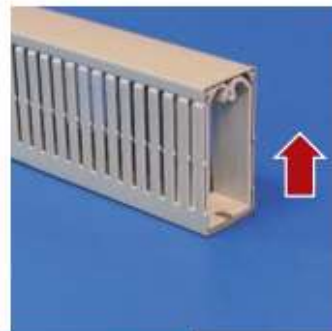
The product is really easy to install also thanks to the cover that doesn't fall off although the trunking is put vertically or turned upside down



The sectionable separator permits to divide the inner space in some compartments in order to keep the different circuits separated



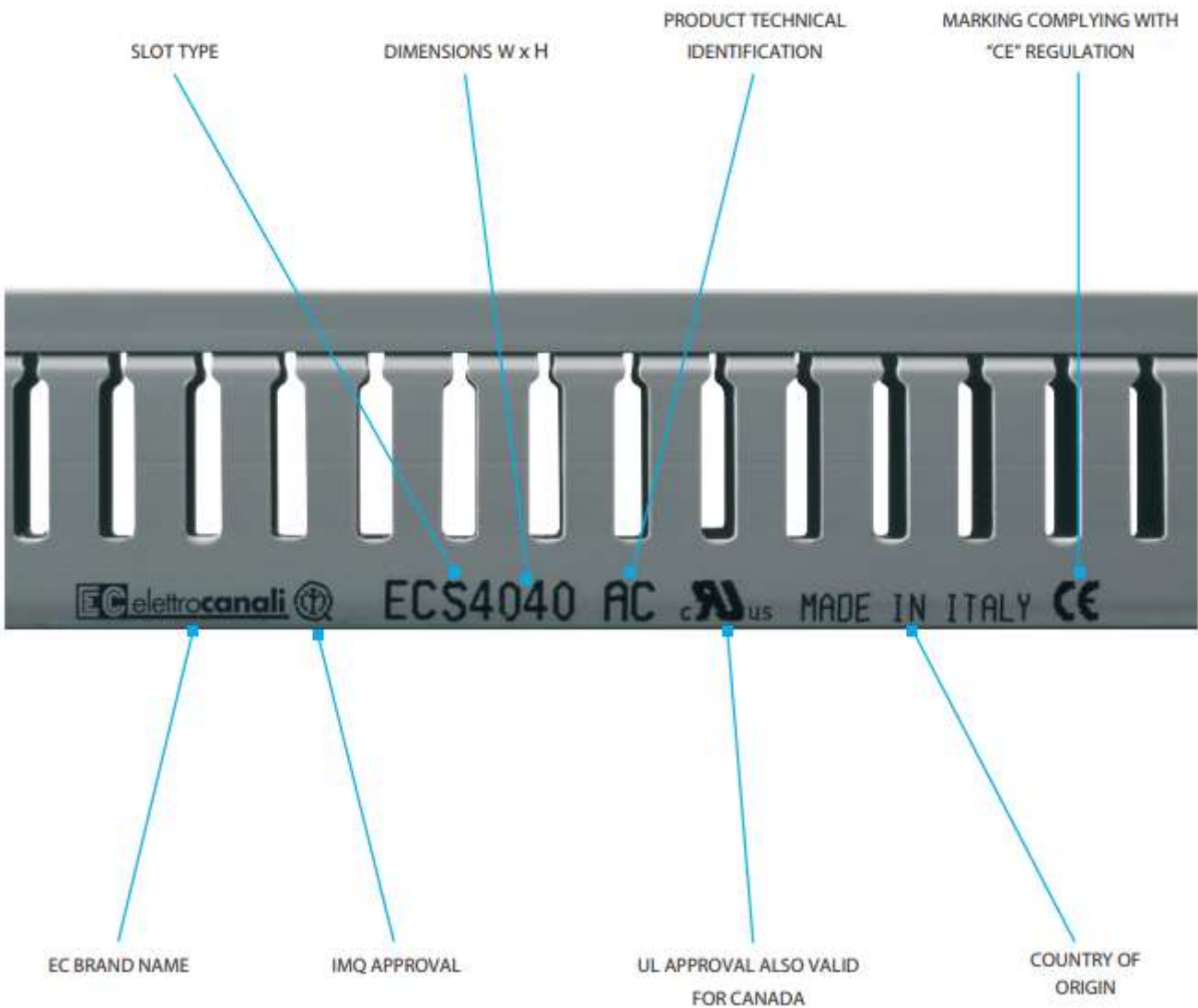
The cable retainers, which can be used with or without the separator, prevent the cable from falling out of the trunkings



The cable retainers permit to annul the pressure of the cables on the cover during the transport of the cabled electrical cabinets



## MARKING OF THE SLOTTED TRUNKINGS





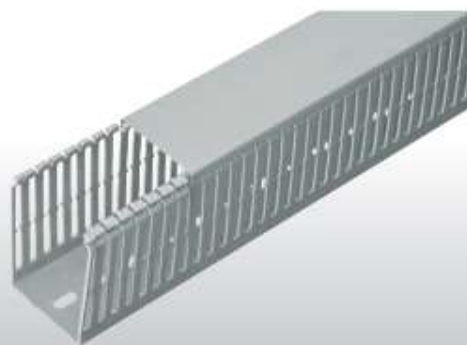
## SLOTTED TRUNKINGS 4/6/4 WITH COVER **SERIE SH**

### MAIN TECHNICAL FEATURES:

- Made of: halogen free technopolymer according to the Standards EN 50267-2-1, EN 50267-2-2, IEC 60754-1, IEC 60754-2.
- Emission limits according to the Standards HCl, HBr, HF: <0,1.
- Self-extinguishing according to the Standard UL94 V2 at 1,6mm.
- Resistance to abnormal heat: up to 960° C (Glow Wire Test, Reference Standard IEC 695-2-1).
- Dimensional stability between -25° C +90° C.
- Product compliant with the standards EN 50085-1:2005 + A1:2013, EN 50085-2-3:2010, UL 1565 ED.4.
- **Narrow slot 4/6/4**, perforated bottom according to the Standard DIN 43659, standard bar length: 2m.
- Packed in strong cardboard boxes suitable for transport and storage.



ITEM	EXTERNAL DIMENSIONS W x H mm	PACKAGING m
ECSH2540	25x40	100
ECSH2560	25x60	70
ECSH2580	25x80	56
ECSH4040	40x40	70
ECSH4060	40x60	56
ECSH4080	40x80	40
ECSH6040	60x40	50
ECSH6060	60x60	32
ECSH6080	60x80	36
ECSH8040	80x40	40
ECSH8060	80x60	28
ECSH8080	80x80	30
ECSH10040	100x40	28
ECSH10060	100x60	20
ECSH10080	100x80	24
ECSH12040	120x40	24
ECSH12060	120x60	20
ECSH12080	120x80	16







## ■ SLOTTED TRUNKINGS 4/6/4 WITH COVER SERIE SH

### MAIN TECHNICAL FEATURES:

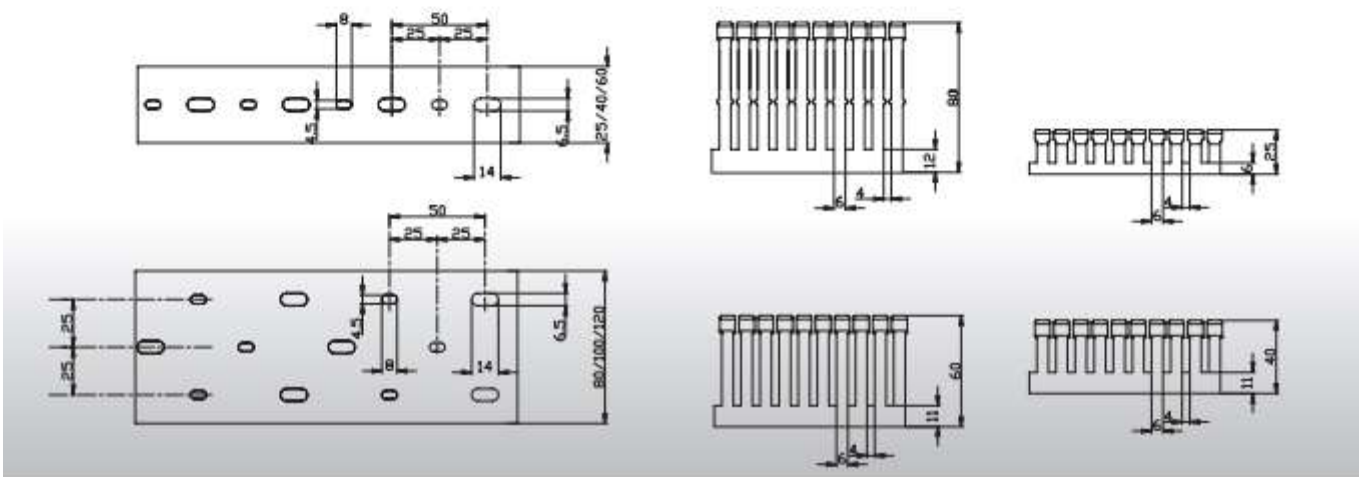
- Made of: halogen free technopolymer according to the Standards EN 50267-2-1, EN 50267-2-2, IEC 60754-1, IEC 60754-2.
- Emission limits according to the Standards HCl, HBr, HF: <0,1.
- Self-extinguishing according to the Standard UL94 V2 at 1,6mm.
- Resistance to abnormal heat: up to 960° C (Glow Wire Test, Reference Standard IEC 695-2-1).
- Dimensional stability between -25° C +90° C.
- Product compliant with the standards EN 50085-1:2005 + A1:2013, EN 50085-2-3:2010, UL 1565 ED.4.
- Packed in strong cardboard boxes suitable for transport and storage.



## ■ Spare cover for slotted trunkings

ITEM	EXTERNAL DIMENSIONS W mm	PACKAGING m
ECCR25HG	25	100
ECCR40HG	40	100
ECCR60HG	60	100
ECCR80HG	80	100
ECCR100HG	100	60
ECCR120HG	120	80

The 40 mm- wide can serve as insulating cover for the fixing screw if installed in the proper guides on the bottom of the trunkings in the widths 80/100/120mm.





## CABLE RETAINERS / RAILS DIN EN 50022 / CUTTING MACHINE

### MAIN TECHNICAL FEATURES CABLE RETAINERS:

- Made of: rigid nylon.
- Prevent cables from falling off during the installation
- Retainers can be fixed to the trunkings by screws.
- Can be used both in the cable trunkings and the slotted trunkings.
- Packed in strong cardboard boxes suitable for transport and storage.

CE

GREY RAL 7035

### Cable retainers

ITEM	TRUNKING DIMENSIONS mm	DESCRIPTION	PACKAGING PIECES
ECCO4040	40x40	CABLE RETAINERS	5/25
ECCO4060	40x60	CABLE RETAINERS	5/25
ECCO4080	40x80	CABLE RETAINERS	5/25
ECCO40100	40x100	CABLE RETAINERS	5/25
ECCO6040	60x40	CABLE RETAINERS	5/25
ECCO6060	60x60	CABLE RETAINERS	5/25
ECCO6080	60x80	CABLE RETAINERS	5/25
ECCO60100	60x100	CABLE RETAINERS	5/25
ECCO8040	80x40	CABLE RETAINERS	5/25
ECCO8060	80x60	CABLE RETAINERS	5/25
ECCO8080	80x80	CABLE RETAINERS	5/25
ECCO80100	80x100	CABLE RETAINERS	5/25
ECCO10040	100x40	CABLE RETAINERS	5/25
ECCO10060	100x60	CABLE RETAINERS	5/25
ECCO10080	100x80	CABLE RETAINERS	5/25
ECCO100100	100x100	CABLE RETAINERS	5/25
ECCO12040	120x40	CABLE RETAINERS	5/25
ECCO12060	120x60	CABLE RETAINERS	5/25
ECCO12080	120x80	CABLE RETAINERS	5/25

### Rails DIN EN 50022

ITEM	LENGTH m	DESCRIPTION TYPE	DIMENSIONS mm	PACKAGING PIECES
EC460	2	BLANK DIN RAIL	35x7,5x1	20
EC460F	2	PERFORATED DIN RAIL	35x7,5x1	20
EC46015	2	BLANK DIN RAIL	35x15x1,5	10

### Hand cutting machine for slotted trunkings

ITEM	DESCRIPTION	CUT DIMENSIONS mm	PACKAGING PIECES
ECADC	HAND CUTTING MACHINE	W = 125 - H = 120	1

The cutting machine consists of a manually operated blade through a lever that cuts channels, lids and the like of plastic material. Suitable for both types of channel A or S with wide or narrow pitch. Minimum width 25 mm, maximum 125 mm, maximum height 120 mm. The cutting machine must be firmly attached to an appropriate work table. Weight 7 Kg. Dimensions 1450x950x260 mm - Blade dimensions: 180x150x2 mm.



ECCO

EC460

ECADC



## ■ USABLE AREA OF THE SLOTTED TRUNKINGS SERIES A AND S

ITEM	DESCRIPTION	SECTION mm <sup>2</sup>	CABLE TYPE HO7-U/R/K mm <sup>2</sup>		
			1	1,5	2,5
ECA2525 - ECS2525	Slotted trunking with cover dim. 25x25 mm	480	46	34	24
ECA2540 - ECS2540	Slotted trunking with cover dim. 25x40 mm	760	72	54	38
ECA2560 - ECS2560	Slotted trunking with cover dim. 25x60 mm	1100	105	79	55
ECA2580 - ECS2580	Slotted trunking with cover dim. 25x80 mm	1520	145	109	76
ECA4025 - ECS4025	Slotted trunking with cover dim. 40x25 mm	752	72	54	38
ECA4040 - ECS4040	Slotted trunking with cover dim. 40x40 mm	1214	116	87	61
ECA4060 - ECS4060	Slotted trunking with cover dim. 40x60 mm	1950	186	139	98
ECA4080 - ECS4080	Slotted trunking with cover dim. 40x80 mm	2530	241	181	127
ECA40100 - ECS40100	Slotted trunking with cover dim. 40x100 mm	3110	296	222	156
ECA6040 - ECS6040	Slotted trunking with cover dim. 60x40 mm	1930	184	138	97
ECA6060 - ECS6060	Slotted trunking with cover dim. 60x60 mm	3046	290	218	152
ECA6080 - ECS6080	Slotted trunking with cover dim. 60x80 mm	4215	401	301	211
ECA60100 - ECS60100	Slotted trunking with cover dim. 60x100 mm	5332	508	381	267
ECA8040 - ECS8040	Slotted trunking with cover dim. 80x40 mm	2530	241	181	127
ECA8060 - ECS8060	Slotted trunking with cover dim. 80x60 mm	4202	400	300	210
ECA8080 - ECS8080	Slotted trunking with cover dim. 80x80 mm	5620	535	401	281
ECA80100 - ECS80100	Slotted trunking with cover dim. 80x100 mm	7064	673	505	353
ECA10040 - ECS10040	Slotted trunking with cover dim. 100x40 mm	3316	316	237	166
ECA10060 - ECS10060	Slotted trunking with cover dim. 100x60 mm	5236	499	374	262
ECA10080 - ECS10080	Slotted trunking with cover dim. 100x80 mm	7156	682	511	358
ECA100100 - ECS100100	Slotted trunking with cover dim. 100x100 mm	8980	855	641	449
ECA12040 - ECS12040	Slotted trunking with cover dim. 120x40 mm	4040	385	289	202
ECA12060 - ECS12060	Slotted trunking with cover dim. 120x60 mm	6340	604	453	317
ECA12080 - ECS12080	Slotted trunking with cover dim. 120x80 mm	8640	823	617	432